

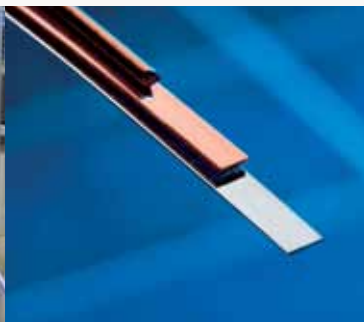
Technical datasheet

Luvata Sunwire® is a tailor-made product. It is our flattest, straightest, softest wire yet, and more versatile than ever before. Our technical experts work closely with our customers to choose the right product for their application and to design a solution that works.

Softer copper has many advantages including faster throughput, better yield and a much lower breakage rate for delicate silicon solar cells. Quality inspection certificate 3.1 is included in every shipment.

This datasheet serves as a guide to the product specifications. For more detailed information, talk to us.

Sunwire® photovoltaic wire
by **LUVATA**



About Luvata

Luvata is a world leader in metal solutions manufacturing and related engineering services. Luvata's solutions are used in industries such as renewable energy, power generation, automotive, medicine, air-conditioning, industrial refrigeration, and consumer products. The company's continued success is attributed to its longevity, technological excellence and strategy of building partnerships beyond metals. Employing 6,300 staff in 17 countries, Luvata works in partnership with customers such as Siemens, Toyota, CERN, and Carrier.



Dimensions*

Thickness (mm):	0,080 – 0,500 ± 0,007
Width (mm):	0,300 – 6,000 ± 0,08

Coatings (hot dipped)*

Lead free (RoHS complied):	Sn100; SnAgCu 96,5/3,0/0,5
Leaded:	SnPbAg 62/36/2; SnPb 63/37; SnPb 60/40
Low temperature:	SnBiAg 60/38/2
Coating composition and thickness:	4 – 50 µm ± 3 µm each side

Base Material

Cu-OF1 CW007A (Acc. EN13602)	CDA 102 – Electrical Conductivity 101% – 103% IACS Resistivity $\leq 1,72 \times 10^{-8} \Omega m$
------------------------------	---

Mechanical Properties

Available Yield Strengths $R_{p0.2}$ (N/mm ²):	<140
	<90
	<70
	<50
Elongation at fracture:	>25%
Camber (mm/m):	<6 measured from the center of the spool

Spool Dimensions* (mm)

Spool type	d1	d2	d3	L1	L2	Approximate winding volume in kg
SV 150 / 10-S	152	100,5	16,1	121,5	101	5
K 160	160	100	22	160	128	8
HKV 160	160	90	22	160	85	8
HKV 200	200	112	22	200	106	15 – 18
SV 380	380	114	102	depends on wire width	depends on wire width	1,5 – 5,0
SD 300 K	300	212	51,5	103	91	15 – 18

Pre-cut*

65 mm - 630 mm

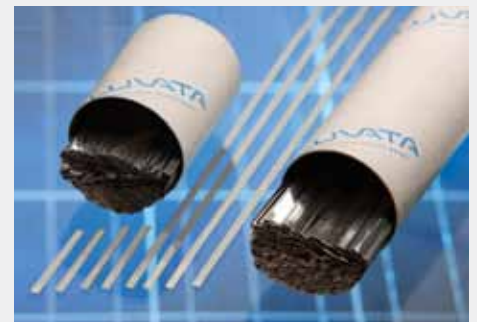
* Also according to customer specification



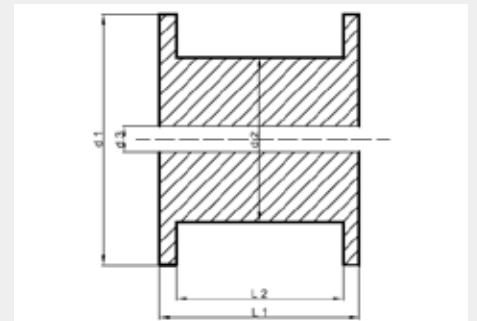
Spool types



SV 380



Pre-cut



Spool dimensions

Luvata Pori Oy

Kuparitie P.O. Box 60
FI-28101 Pori
Finland
Tel: +358 2 626 6111
Fax: +358 2 626 5318

Luvata Appleton LLC

553 Carter Court
Kimberly 54136
WI, USA
Tel: +920 749 3820
Fax: +920 749 3853

Luvata Malaysia Sdn Bhd

PL0 573 Jalan Keluli 10
Kawasan Perindustrian
Pasir Gudang
81700 Pasir Gudang
Johor, Malaysia
Tel: +607 252 6688
Fax: +607 252 3733

Luvata Suzhou Ltd.

53 Sanzhuang Street
Weiting Town
Suzhou Industrial Park
Jiangsu Province
215121
China
Tel: +86 512 6285 1018
Fax: +86 512 6285 1020

