



Technical datasheet

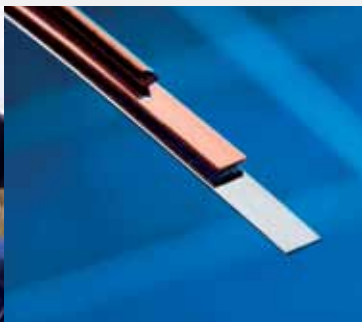
Luvata Special Products Sunwire® is a tailor-made product. It is our flattest, straightest, softest wire yet, and more versatile than ever before. Our technical experts work closely with our customers to choose the right product for their application and to design a solution that works.

Softer copper has many advantages including faster throughput, better yield and a much lower breakage rate for delicate silicon solar cells. Quality inspection certificate 3.1 is included in every shipment.

This datasheet serves as a guide to the product specifications. For more detailed information, talk to us.

Sunwire® photovoltaic ribbon

by **LUVATA**
SPECIAL PRODUCTS



About Luvata Special Products

Luvata Special Products is a world leader in metal solutions manufacturing and related engineering services to industries such as renewable energy, automotive, healthcare, and power generation and distribution. The company's continued success is attributed to its longevity, technological excellence and strategy of building partnerships beyond metals. Employing over 1,300 staff in 7 countries, Luvata Special Products works in partnership with customers such as ABB, CERN, Siemens and Toyota. Luvata Special Products is a group company of Mitsubishi Materials Corporation.

Dimensions*

Thickness (mm):	0,080 – 0,500 ± 0,007
Width (mm):	0,300 – 6,000 ± 0,08

Coatings (hot dipped)*

Lead free (RoHS complied):	Sn100; SnAgCu 96,5/3,0/0,5
Leaded:	SnPbAg 62/36/2; SnPb 63/37; SnPb 60/40
Low temperature:	Bi-containing lead-free solder alloys
Coating composition and thickness:	4 – 50 µm ± 3 µm each side

Base Material

Cu-OF1 CW007A (Acc. EN13602)	CDA 102 – Electrical Conductivity 101% – 103% IACS Resistivity ≤ 1,72 x 10 ⁻⁸ Ωm
------------------------------	--

Mechanical Properties

Available Yield Strengths Rp _{0,2} (N/mm ²):	<50-140
Elongation at fracture:	>25%
Camber (mm/m):	<6 measured from the center of the spool

Spool Dimensions* (mm)

Spool type	d1	d2	d3	L1	L2	Approximate winding volume in kg
SV 10-S	152	100,5	16,1	121,5	101	5
K 160	160	100	22	160	128	8
HKV 160	160	90	22	160	85	8
HKV 200	200	112	22	200	106	15 – 18
SD 300 K	300	212	51,5	103	91	15 – 18

Pre-cut*

65 mm - 630 mm

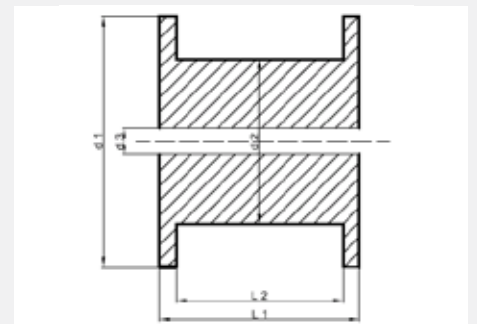
* Also according to customer specification



Spool types



Pre-cut



Spool dimensions

Luvata Pori Oy
Kuparitie
P.O. Box 60
FI-28101 Pori
Finland
Tel: +358 2 626 6111
Fax: +358 2 626 5337

Luvata Appleton LLC
553 Carter Court
Kimberly 54136
WI, USA
Tel: +920 749 3820
Fax: +920 749 3853

Luvata Malaysia Sdn Bhd
PLO 573 Jalan Keluli 10
Kawasan Perindustrian
Pasir Gudang
81700 Pasir Gudang
Johor, Malaysia
Tel: +607 252 6688
Fax: +607 252 3733

**MM Metal Products
(Suzhou) Co., Ltd.**
53 Sanzhuang Street
Weiting Town
Suzhou Industrial Park
Jiangsu Province
215121 China
Tel: +86 512 6285 1022

